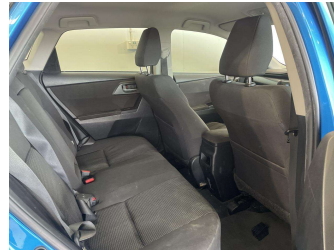
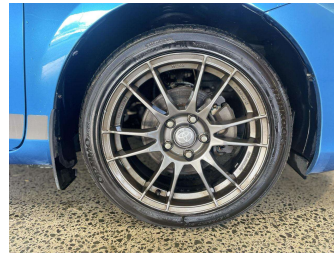



2016 Toyota Corolla ****AWESOME IN BLUE****



Purchase Price **\$14,995**
Includes GST, Registration & Licensing

Indicative repayments
\$96.96 per week*
Based on a 48 month term & no deposit.
Total repayments (208) = **\$20,168.09**



Gain peace of mind with Mechanical Breakdown Insurance. **Ask us how.**




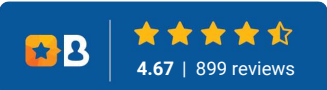
Top features

- » 2 keys
- » Alloys
- » Bluetooth
- » Body Kit (Factory)
- » Central Locking
- » Cruise Control
- » Electric Mirrors
- » Factory Tint
- » Immobiliser
- » NZ New
- » Power Steering
- » Rear Wiper
- » Remote locking
- » Reverse Camera

Body Style	4 door, Hatchback	Reg No.	KEL269
Odometer	137,515 km	Ext Colour	Blue
Engine	1798 cc, Internal Combustion	History	NZ New
Fuel Type	Petrol	Seats	5 seats
Transmission	Automatic	CO2 Emissions	-
Wheels	-	Energy Economy	-
VIN	JTNKU3JE40J538845		
Interior	Blue-Grey, Cloth		
Safety	-		

Stock ID: 19943

 Te Rapa Wholesale Cars | Phone 07 846 9429 | Email sales@terapacars.co.nz
35 Greenwood Street, Frankton, Hamilton, New Zealand
www.terapacars.co.nz



* Te Rapa Wholesale Cars is not a lender nor a financial adviser. Any amounts displayed should not be seen as an offer of finance or taken as financial advice. The interest rate, fees and loan term used in this calculation may not actually represent those available from lenders. Actual interest rates, fees and loan terms will vary per lender and are typically based on an assessment of your credit risk and responsible lending criteria. Any repayment amounts displayed are indicative only and have been calculated using several other indicative inputs. The interest rate used in this calculation is an arbitrary 13.95%, however exact interest rates vary per lender. The term of the loan used in this calculation is 48 month. Exact terms available vary per lender although options typically include 6, 12, 18, 24, 36, 48 and 60 months. This calculation also includes a typical mandatory fee charged by lenders. This is a one-off establishment fee of \$395.00. Typically, this fee can be paid upfront or, as in this calculation, be capitalised over the contract term, ie. included in the loan amount. This fee can vary per lender and other non-mandatory fees and charges may also apply. The total amount of repayments has been calculated by multiplying 208 weekly repayments (based on a 48 month term) by the weekly repayment amount of \$96.96 which equals \$20,168.09. This calculator does not consider any of your own personal circumstances and we strongly suggest you seek budgeting advice prior to committing to any loan contract. Responsible lending criteria and lender terms and conditions will likely apply to any finalised loan contract. Proof of security and/or vehicle insurance may also be required before proceeding.